

**34@ THE WORKS**

# APARTMENT TWENTY EIGHT

TWO BEDROOM, THIRD FLOOR - BALCONY / LIFT ACCESS

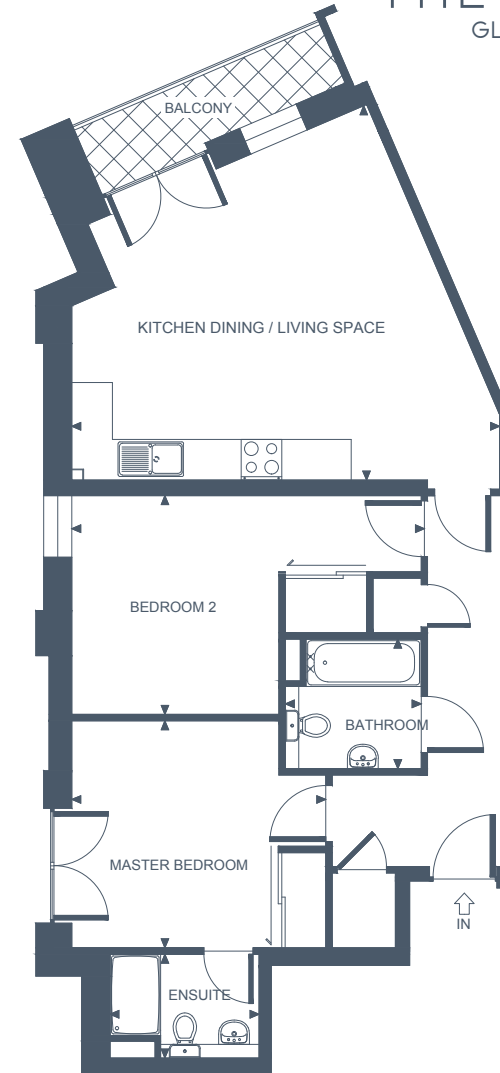


**THE WORKS**  
GLASGOW G3

## Apartment Dimensions

Kitchen Dining / Living Space	6.3m x 5.5m	'20"9 x '18"1
Master Bedroom	3.8m x 3.4m	'12"4 x '11
Ensuite	2.3m x 1.5m	'7"5 x '5
Bedroom 2	5.2m x 3.2m	'16"11 x '10"7
Bathroom	2m x 1.9m	'6"7 x '6"3
<b>Gross Internal Floor Area</b>	<b>74 Sqm</b>	<b>800 Sq ft</b>

All areas and measurements are approximate.



Kitchen layouts may have changed since time of publication.

Important Notice: Savills, their clients and any joint agents give notice that:

1. They are not authorised to make or give any representations or warranties in relation to the property either here or elsewhere, either on their own behalf or on behalf of their client or otherwise. They assume no responsibility for any statement that may be made in these particulars. These particulars do not form part of any offer or contract and must not be relied upon as statements or representations of fact.
2. Any areas, measurements or distances are approximate. The text, photographs and plans are for guidance only and are not necessarily comprehensive. It should not be assumed that the property has all necessary planning, building regulation or other consents and Savills have not tested any services, equipment or facilities. Purchasers must satisfy themselves by inspection or otherwise.

FOR MORE INFORMATION CONTACT SAVILLS

# 0141 222 5869

[WWW.THEWORKS-G3.CO.UK](http://WWW.THEWORKS-G3.CO.UK)

